

# ReassureMe.com

## Running the Netintelligence Installation on your First Computer

1. When you register for Netintelligence, you will be asked to download the installation file (Figure 1). To go ahead immediately with the installation, choose 'Open'. To save the Netintelligence installation application to your computer, click 'Save'. If you select the 'Save' option, you can run the installation application at any time (i.e. locate the Netintelligence installation application icon in the folder in which it was saved, and double-click, then follow the installation wizard instructions).

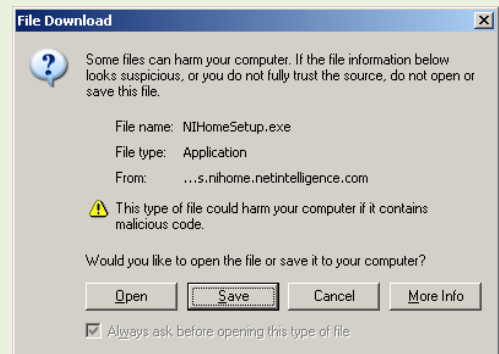


Figure 1: The 'File Download' dialogue box

If you saved the file to your desktop, the icon you will double-click will look like the one shown here (Figure 2):

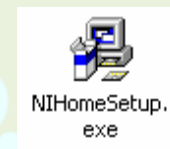


Figure 2: The installation desktop icon

2. When you start the installation application you'll see this 'Welcome' screen (Figure 3).

To continue with the installation, click 'Next'.

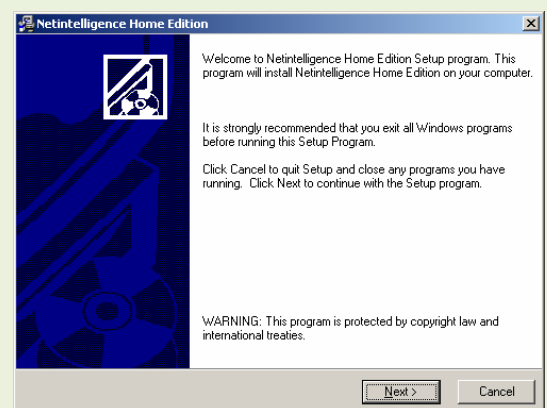


Figure 3: The installation wizard 'Welcome' screen

3. The screen shown now (Figure 4) asks you to choose where to save the Netintelligence files. You can either choose the folder shown, or click the "Browse" button to search for and select another folder to copy the files to.

Once you have decided where to save the files, click 'Next'.

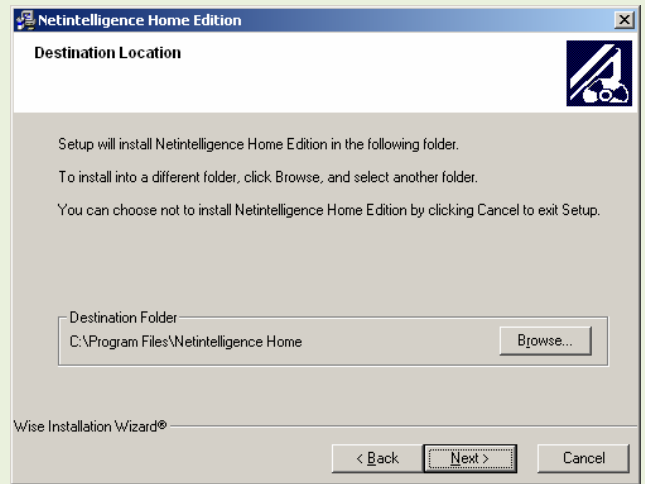


Figure 4: The installation wizard 'Destination Location' screen

4. Now you'll be asked to provide the details that you were supplied with when you registered Netintelligence, in order to activate your installation (Figure 5). Enter your email address (or username if appropriate) and password in the spaces provided.

When you have done this, click 'Next'.

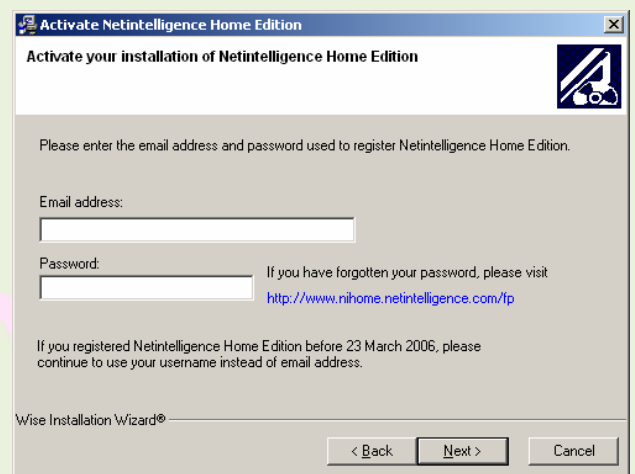


Figure 5: The installation wizard 'Activate' screen

5. You're now ready to start copying the Netintelligence files to your computer. Click 'Next' on this screen (Figure 6) to begin copying.

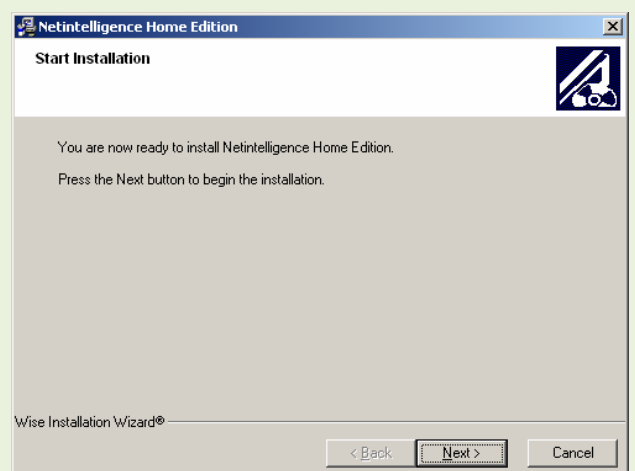


Figure 6: The installation wizard 'Start Installation' screen

- Once all the files are copied, the final screen will be displayed (Figure 7).

Click the 'Finish' button to complete the installation wizard.

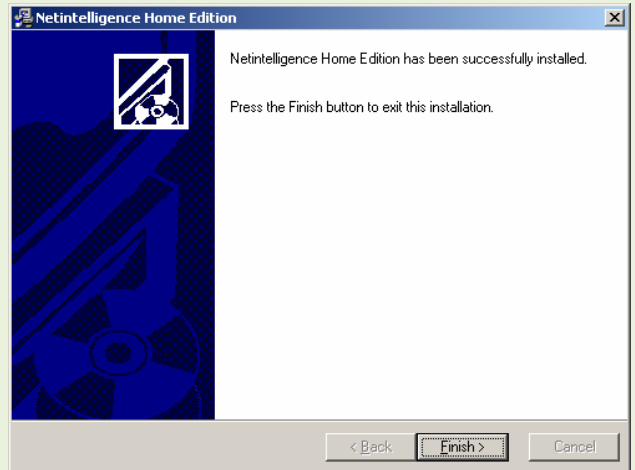


Figure 7: The installation wizard 'Finish' screen

- When the installation wizard is complete, you'll be asked to restart your computer (Figure 8), so that the necessary changes to settings for Netintelligence can take effect on your machine.

This is the final step in the installation process.

Click 'OK', and allow your machine to restart.

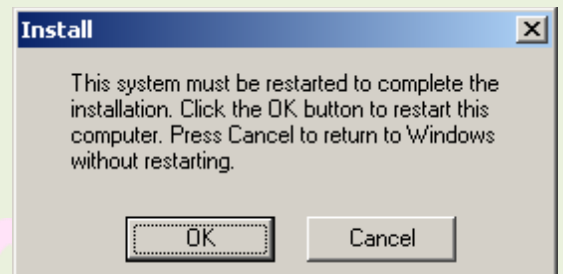


Figure 8: The 'Restart Computer' dialogue box

**IMPORTANT:** It is essential that you **restart** your machine before continuing. Please make sure that you restart your machine before following continuing with any further configuration of the service..

- When the machine has restarted, you will have a new shortcut on your desktop (Figure 9). Double-clicking this shortcut will take you to the Netintelligence Control Centre login page.

Alternatively, go to the [www.ReassureMe.com](http://www.ReassureMe.com) home page and click on the "Login to Control Panel" button.



Figure 9: The Control Centre desktop icon



Figure 10: The Control Centre login from the ReassureMe.com Home Page.

**Your installation of Netintelligence Broadband Home Edition on your first machine is now complete.**

You can install on further machines by visiting your Control Centre from the computer on which you wish to install, and following the instructions given under 'Install Netintelligence on a new machine' on the 'My Homepage' page, located on the Left Hand Side of your Control Panel Report Summary.